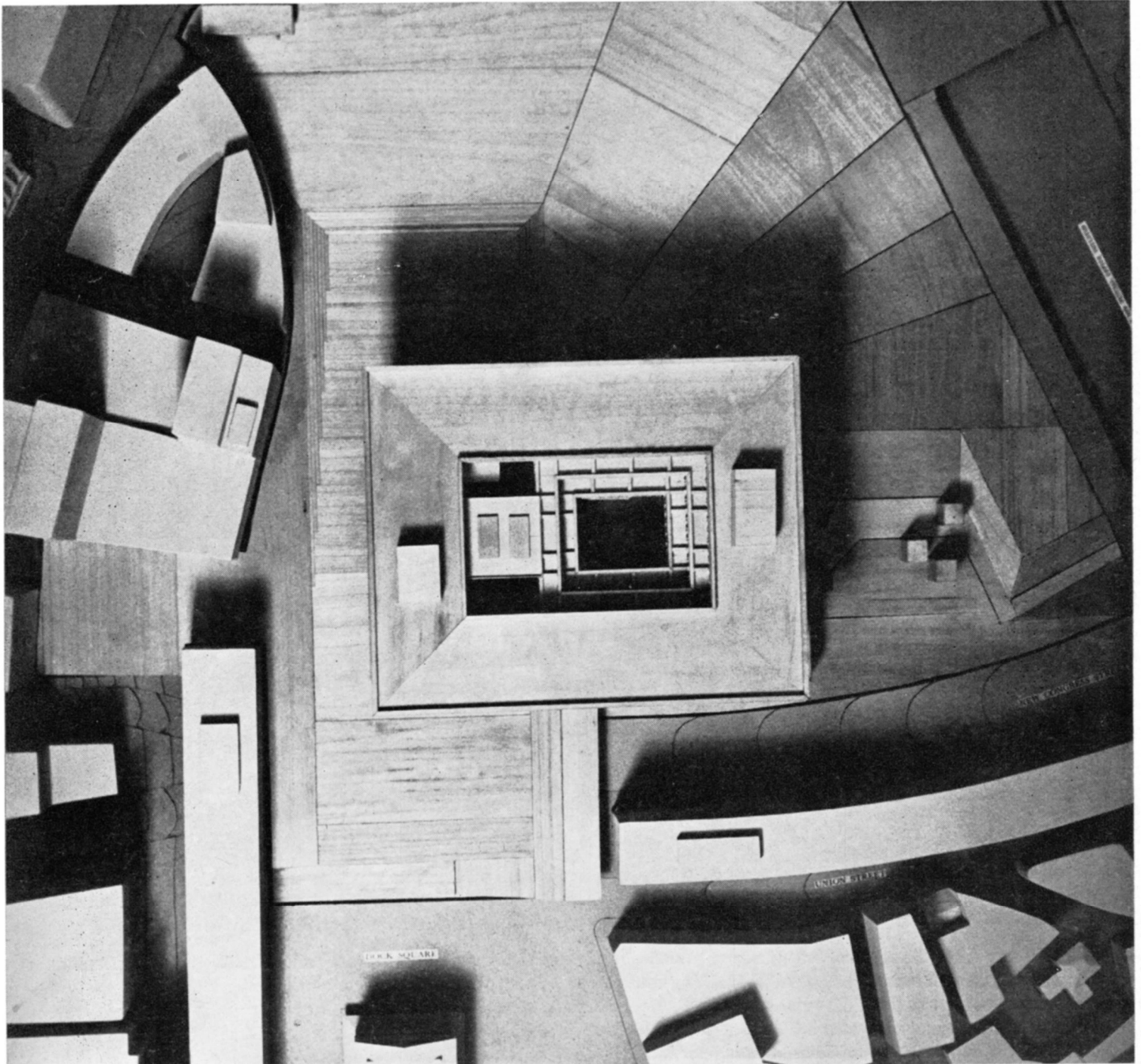


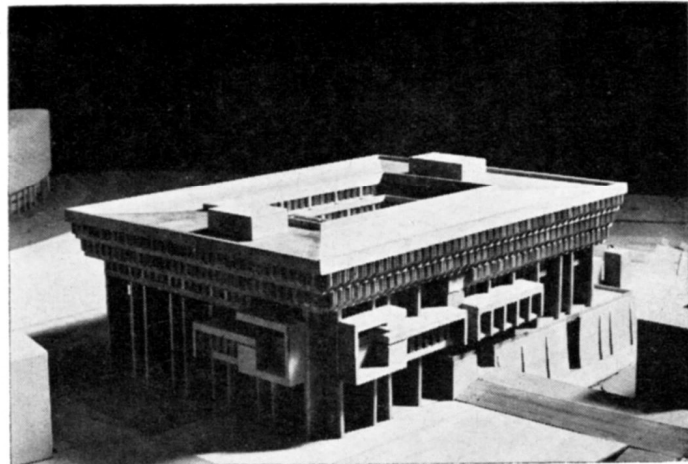
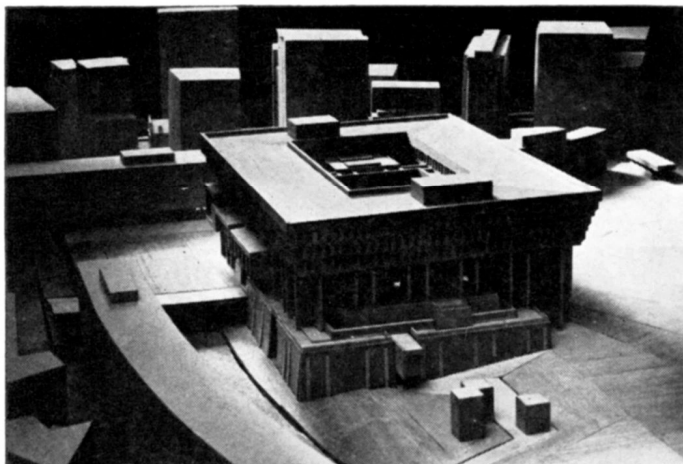
NEWS REPORT

Architecture's Monthly News Digest of Buildings and Projects, Personalities, New Products



Impressive, monumental city square is shown in aerial view of model of winning design for Boston City Hall.

- | | | | |
|----|------------------------------------|----|------------------------------------|
| 65 | NEW YORKERS WIN BOSTON COMPETITION | 77 | BAPTISTS BUILD IN THE ROUND |
| 66 | AISC LAUDS FINE DESIGN IN STEEL | 82 | LONDON PROJECT USES CHELAZZI IDEAS |
| 68 | PRO AND CON ON THE TWA TERMINAL | 86 | WASHINGTON/FINANCIAL NEWS |
| 70 | ANNOUNCING 10th P/A DESIGN AWARDS | 89 | PRODUCTS: AN INTEGRATED SYSTEM |
| 74 | PERSONALITIES: BUSH-BROWN, MOORE | 94 | MANUFACTURERS' DATA |



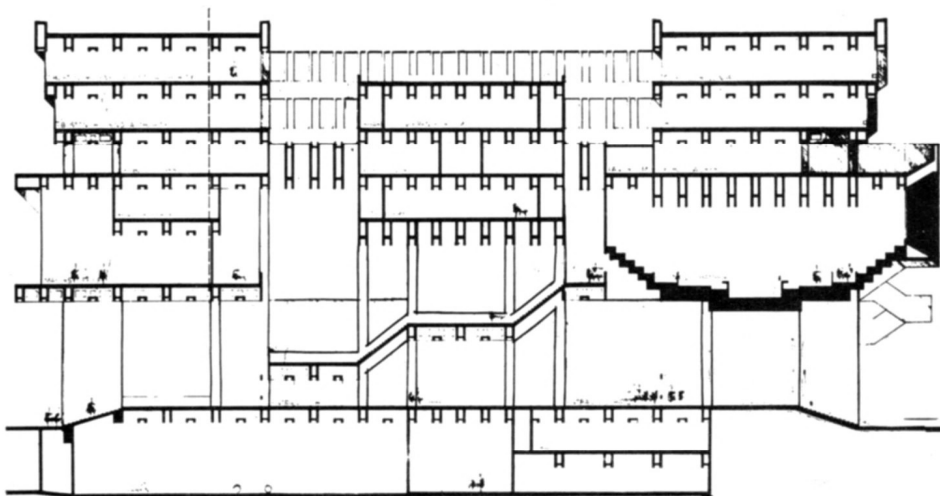
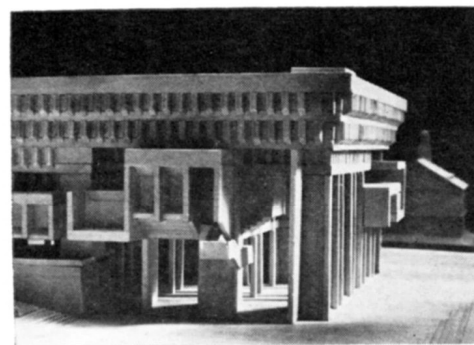
Photos: Alessandro Maccone, Inc.

Boston City Hall: Chandigarh on Scollay Square

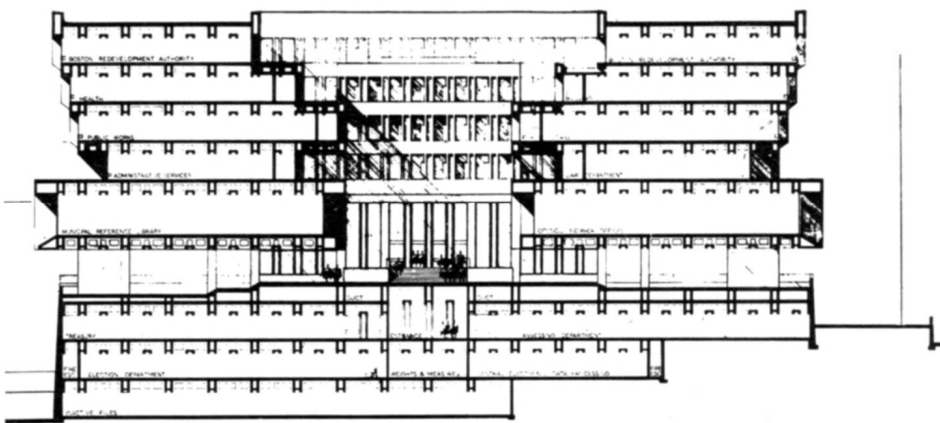
BOSTON, MASS. The team of New Yorkers who won the competition for the design of Boston's City Hall—Gerhard M. Kallmann, Noel M. McKinnell, and Edward F. Knowles—created a proposal that is likely to be talked about and argued for some time to come. It is a quite complicated design that will eventuate in a building of simple, segregated masses. It is, at first glance, a somewhat forbidding monument, which has as one of its main intents the inviting of public appreciation and participation. It is one of the strongest individual statements to come along in quite a while, yet one which will act, in the jury's words, as a "keystone between the historic past and the brilliant future which is to come."

According to the architects, the building is organized in three elements: public areas occupy the base, administrative offices the top, and hung in between are the ceremonial spaces. The City Hall is approached across the new city square and over a series of terraces that rise to the brick-faced "mound" form of the public access area. The roof of this mound is a "stepped terrain" by means of which the visitor reaches the central court containing a major sculpture. The administrative levels are planned in tiers stepping back from this court as they ascend. The ceremonial elements are marked by hooded window devices. From the great interior hall, the visitor can realize all of the major elements of the building.

Structure of the building is based on a system of 3-ft-square, cast-in-place concrete columns and precast concrete vierendeel trusses 5 ft deep. The dimensions of the system are on a columnar grid of 15 ft and 30 ft by 30 ft. Cantilevered tiers of the administrative and ceremonial levels are constructed of floor-to-floor high concrete trusses.



Section shows Mayor's office (left) and Council Chamber (right) below office floors



Center section shows central court circled by stepping-back office floors.