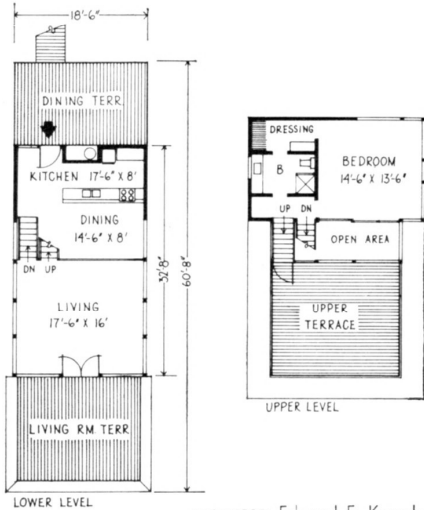


# poised high on a dune



ARCHITECT: Edward F. Knowles  
 LOCATION: Fire Island, New York  
 SIZE: 1,713 square feet, main house  
 772 square feet, decks

REENS



A vacation house is a place to escape everyday routine and to strip away convention. This beach retreat bespeaks a casual brand of living from top to bottom. Poised high on a dune, it is composed of rectilinear units fitted together with the intricacy of a Chinese puzzle. The result: an exciting silhouette on the exterior; four levels for living on the interior. Kitchen and dining area are housed on the lower level, living room on the next, master bedroom, bath and dressing room on the third level, and a rooftop deck for sun worshipers on the fourth. A dining deck of spruce was built off the kitchen and glass doors in the living room open to another deck cantilevered an amazing 16' over the crest of the dune. To capture the ocean view, three walls of the living room are glass and the master bedroom is generously endowed with floor-to-ceiling windows. With the broad expanses of glass, cedar paneling inside and western red cedar shingles outside, the house is a breeze to maintain. Oversized blue plastic shades roll down for evening privacy; most of the furniture is architect-designed and built-in. A guest house supplements the parent structure with four bedrooms, two baths, kitchenette, deck.

### Cantilevered deck for drama

*Top:* Looking precariously balanced on the dune, house actually is securely supported by only six slender columns. The huge spruce deck is cantilevered 16' beyond the living room, railed by wooden benches. A deck on the living room roof affords greater privacy to sunbathers.

### Open planning to stretch space

*Left:* Inside, one experiences an amazing sense of space, the product of expanses of glass and open planning. Kitchen and dining area are separated from living room only by difference of level, and by low planter divider. Built-in cedar furniture seems to occupy little space.